

FOR SALE

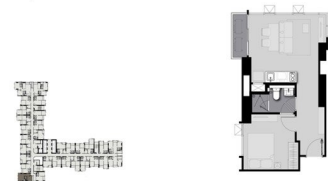
RESIDENTIAL - CONDOMINIUM 398SQFT (37SQM) / CALL FOR PRICE!

+65 9222 4455



1 - Bedroom

TYPE C
398 sqft



RESIDENTIAL - CONDOMINIUM

CHOM PHON, CHATUCHAK, 10900, BANGKOK,
BANGKOK, THAILAND

- LISTING ID: SGLD87066479
- TENURE: FREEHOLD
- TITLE: N/A
- SIZE BUILT-UP: 398SQFT (37SQM)
- SIZE LAND: 7.512AC (3.040HA)
- NO. OF FLOORS: 44
- FLOOR/LEVEL: N/A - MIDDLE FLOOR
- BED ROOMS: 1
- BATH ROOMS: 1
- MAIDS ROOMS: N/A
- PARKING SPACES: N/A
- LAYOUT TYPE: OTHER
- FACING: N/A
- VIEWING: N/A
- SELLING PRICE: **CALL FOR PRICE!**
- COMPLETION YEAR: 2021
- CONDITION: ORIGINAL CONDITION
- FURNISHING: PARTIALLY FURNISHED
- LISTING DATE: JUL 17, 2019

LIFE LADPRAO VALLEY

Partially furnished, 1 bedroom, 1 bathroom Condominium for Sale. Completed in 2021, this unit is in original condition. Others: Freehold Location: Bangkok, Thailand

INTERIOR FACILITIES

- Air-Conditioning
- Balcony

OTHER INTERIOR FEATURES

- Cooker Hob/Hood

EXTERIOR FACILITIES

- 24 Hours Security
- Business Centre
- Covered Car Park
- Function Room

VISIT THIS PROPERTY AT: <https://www.ilikenewlaunch.com/property/SGLD87066479>

SIZE KIAT TAN - HUTTONS ASIA PTE LTD

3 Bishan Place #05-01 CPF Bishan Building
D20, 579838, Singapore

+65 9222 4455
WhatsApp Me

kiat@propertysearch.com.sg

<https://www.ilikenewlaunch.com>



Scan QR Code

Huttons Call for Viewing
The Agency of Choice +65-92224455